

Forenta

Morristown, TN U.S.A.

SELF-CONTAINED UTILITY PRESS

Model 461SURMC-BV
Model 421SURMC-BV



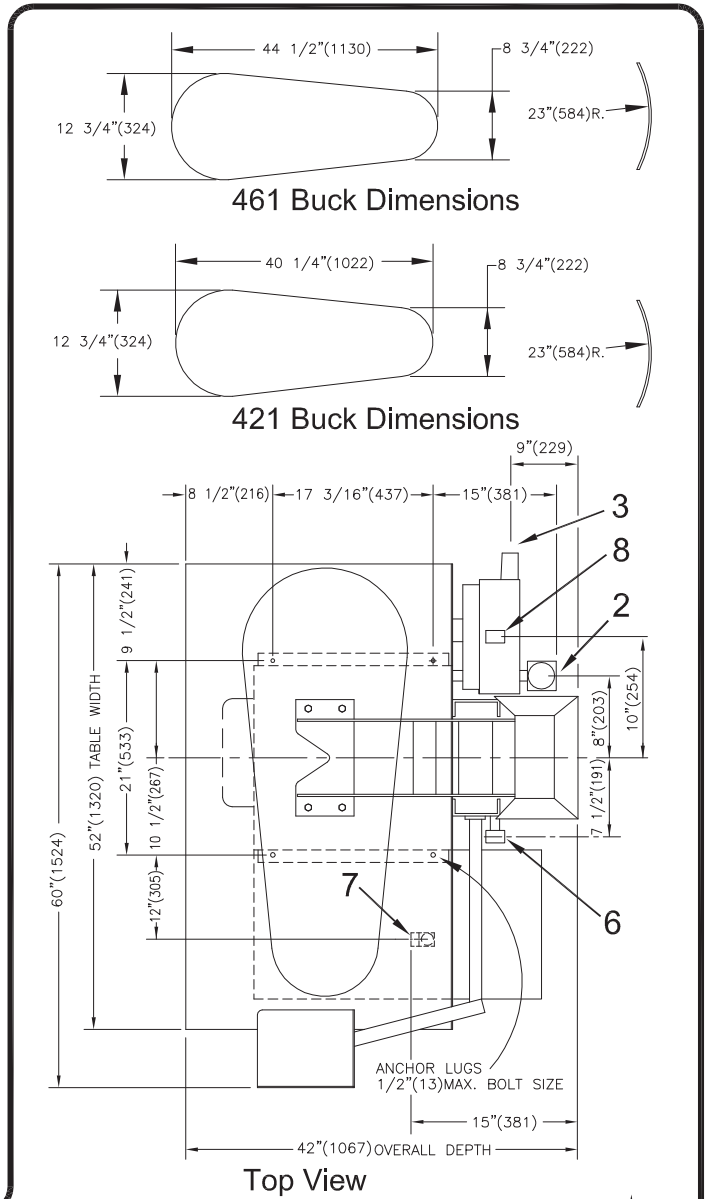
- All the features and quality of a conventional press with built-in steam and vacuum
- External compressed air required
- 12 KW boiler provides plenty of dry steam
- Available with options: Iron Attachment, Hand Iron, Sleeve Board, Water Spray
- 18KW Boiler and Condensate Return Tank will also operate a companion piece of equipment

Options: Iron attachment, hand iron, sleeve board, water spray

Specifications

Models 461SURMC-BV & 421SURMC-BV

Electrical connections		421SURMC-BV 461SURMC-BV
Voltage	400V 3PH 50/60Hz 24amps 15.8KW w/220/240V neutral (12KW Boiler)	standard
Voltage	400V 3PH 50/60Hz 33amps 21.7KW w/220/240V neutral (18KW Boiler)	optional
Voltage	220/240V 3PH 50/60Hz 38amps 14.5KW (12KW Boiler)	optional
Voltage	220/240V 3PH 50/60Hz 53amps 20.2KW (18KW Boiler)	optional
Optional Iron Attachment: Voltage 208-230V 1PH 50/60Hz 800watts 3.7amps .8KW		
Air / Water / Vacuum / Drain connections		
Compressed Air Connection	NPT	3/8"
Air consumption	free air/cycle at 80psig free air/cycle at 552kPa	0.30 FT ³ .008m ³
Rec. air pressure	PSIG kPa	80 552
Vacuum Exhaust Connection		2 1/2" O.D.
Water Connection	(Boiler) NPT (Water Spray) NPT	1/2" 1/4"
Boiler Drain Connection	NPT	1/2"
Pressure Relief Valve Connection	Hose	9/16" I.D.
Weight (crated)		
Shipping	lbs kg	1000 453
1 Control Push Buttons	5 Boiler Drain Connection	
2 Air Connection	6 Water Connection	
3 Vacuum Exhaust Connection	7 Pressure Relief Valve	
4 Electrical Connection	8 Water Spray Water Connection	



Detail Line Drawing (millimeters shown in parentheses)

