

Forenta

Morristown, TN U.S.A.

Single Buck Body Press

Model 827SB



- Designed to finish wide range of sizes and styles
- Super-heated air finishes yoke and sides
- Flat heads for better finish; vacuum buck for smooth fronts
- Soft-air smoothes out wrinkles before pressing
- Color touch screen control panel
- Easily adjustable time cycles
- Production rate indicator
- Blower automatically turns off when not in use
- Self-diagnostics from touch screen

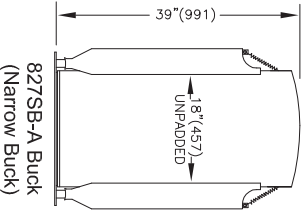
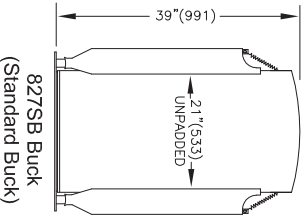
Water spray and mirror standard

Specifications

Model 827SB

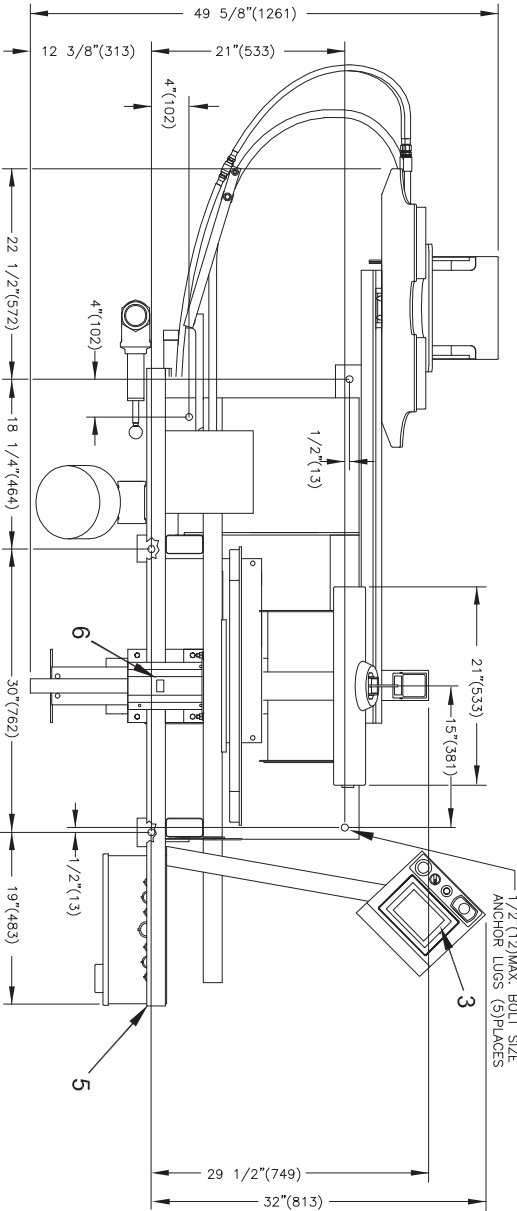
Electrical connections	827SB
208-240V 3PH 50/60Hz 18.8-17.8 Amps 4kW	standard
380-415 / 460V 3PH 50/60Hz 11.5-11.1 / 10.7 Amps 4kW	optional
380-415 / 460V 3PH 50/60Hz 13.7 Amps 4kW, with 240V Neutral wire	optional
Steam and air connections	
Steam inlet	NPT 1/2"
Steam outlet (total of 2 outlets)	NPT 1/2"
Recommended steam pressure	PSIG 115-125 kPa 793-862
Steam consumption @ 125 psig (862 kPa)	lb/hr 51.8 kg/hr 23.4 BHP 1.5
Compressed air	NPT 3/8"
Air consumption/shirt	free air/cycle @ 85 psig free air/cycle @ 586 kPa
Recommended air pressure	PSIG 85 kPa 586
Water connection (for water spray)	NPT 1/4"
Weight (crated)	lbs 1370 kg 621
Shipping	

- 1 Steam connection
- 2 Steam outlets
- 3 Control panel
- 4 Air connection
- 5 Electrical connection
- 6 Water connection (For water spray)

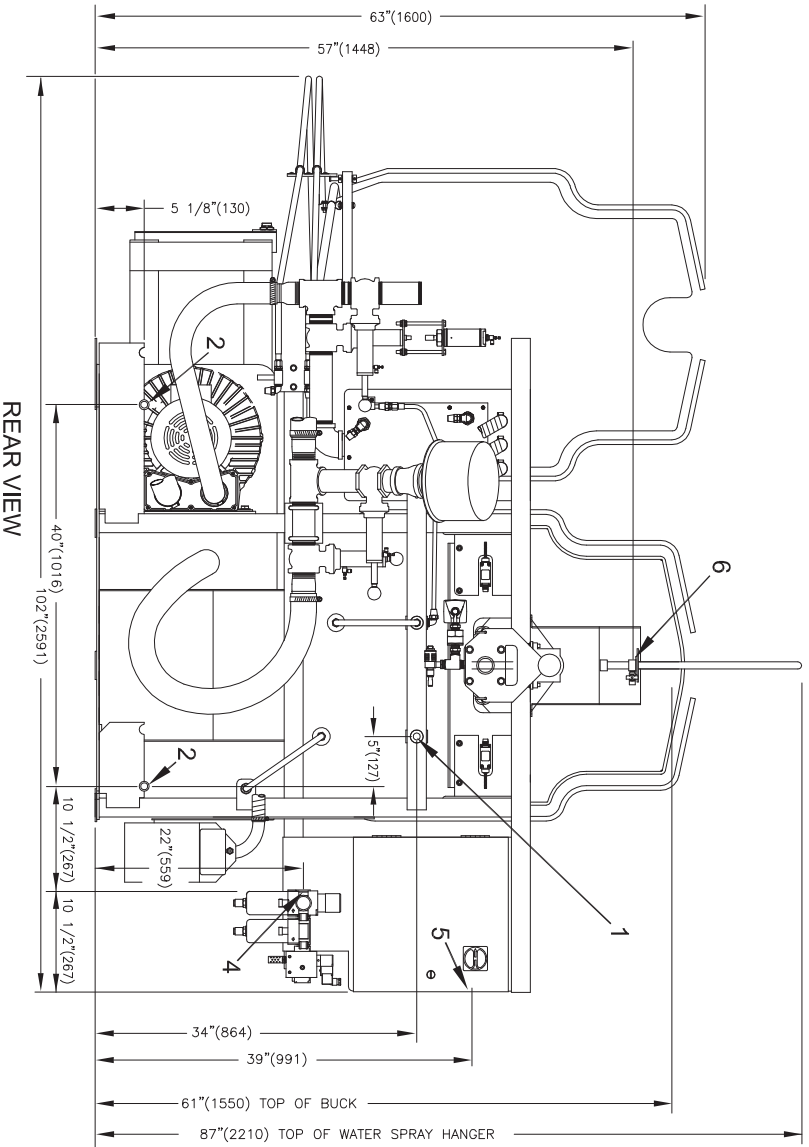


BODY BUCK DIMENSIONS

TOP VIEW



Detail Line Drawing
(millimeters shown in parentheses)



REAR VIEW