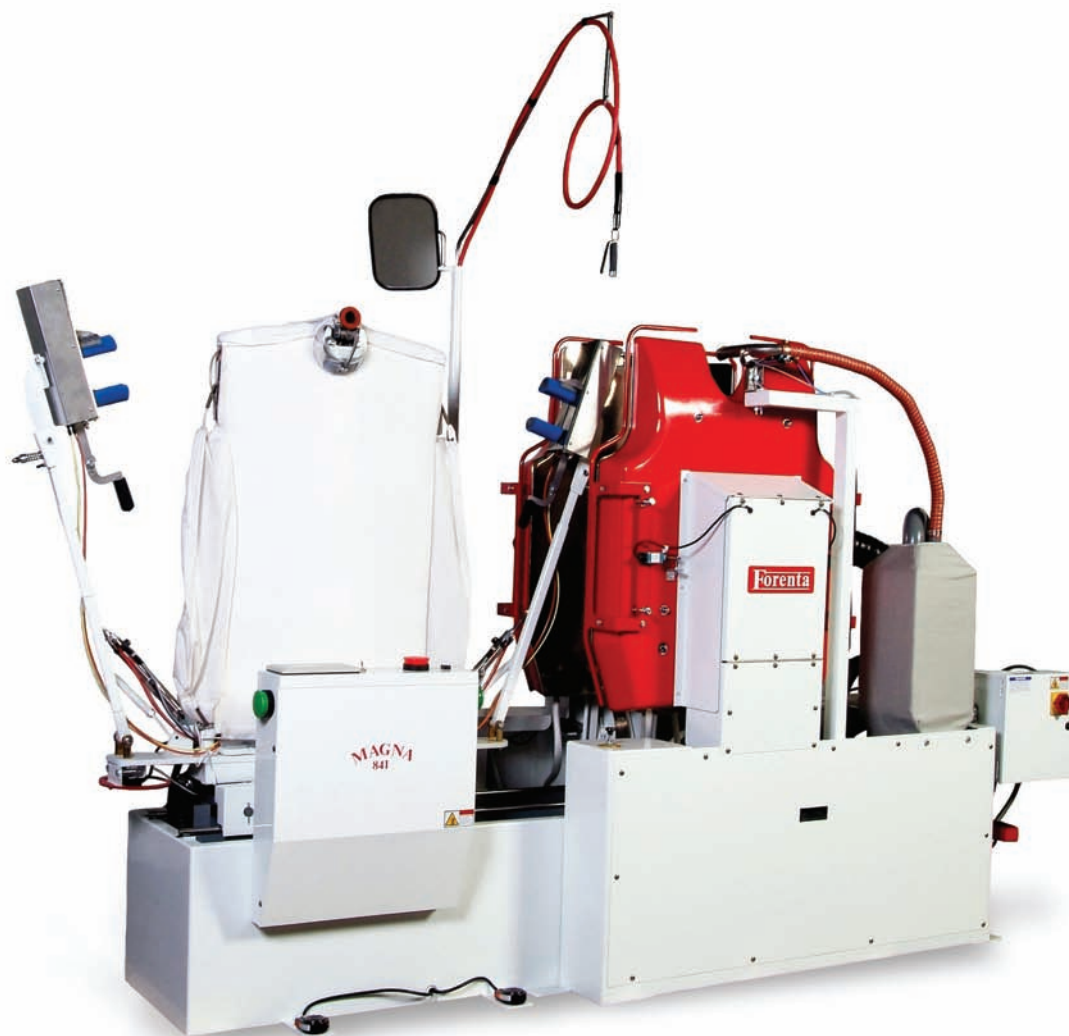


# Forenta

Morristown, TN U.S.A.

## MAGNA MODEL 841SBS Combination Body-Sleeve Press with Cuff Clamps



- Designed to finish the widest range of shirt sizes, long and short sleeves
- Flat heads for efficient heating
- Super-heated drying air to finish yoke and sides
- Dual heating coils for faster drying
- Separate vacuum and blower motors for maximum efficiency
- Foot pedal control to activate the collar clamp, cuff/sleeve clamp, vacuum and cycle; collar clamp opens automatically
- PLC display for selecting cycle times and cycles
- Buck glides easily into pressing position and transfers out automatically when heads open
- Steam and heated blown air finishes sleeves tensioned with modern cuff/sleeve holders
- Streamlined design for easier dressing and better efficiency
- Blower motors turn off automatically when not pressing shirt

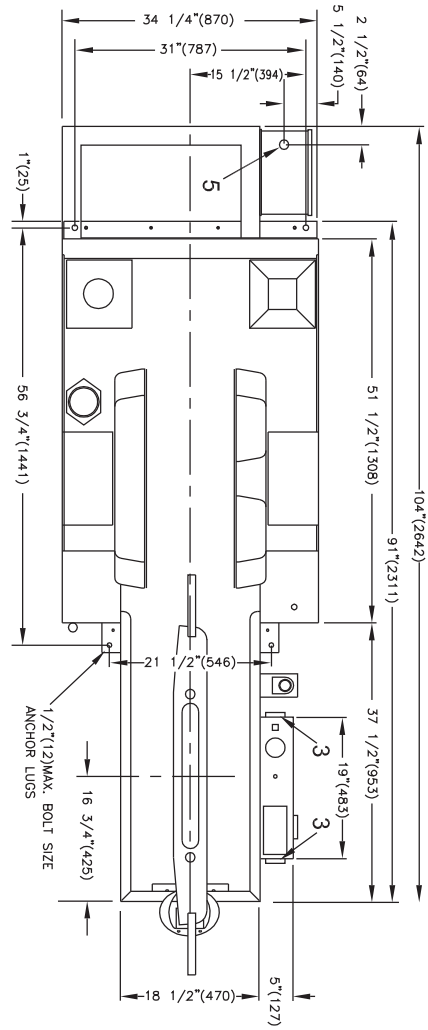
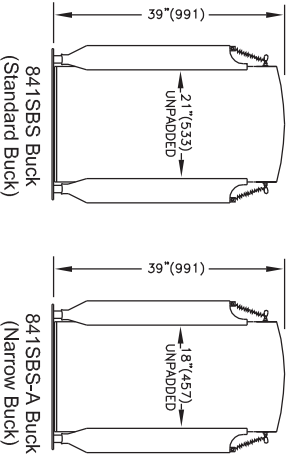
*Water spray and mirror standard*

# Specifications

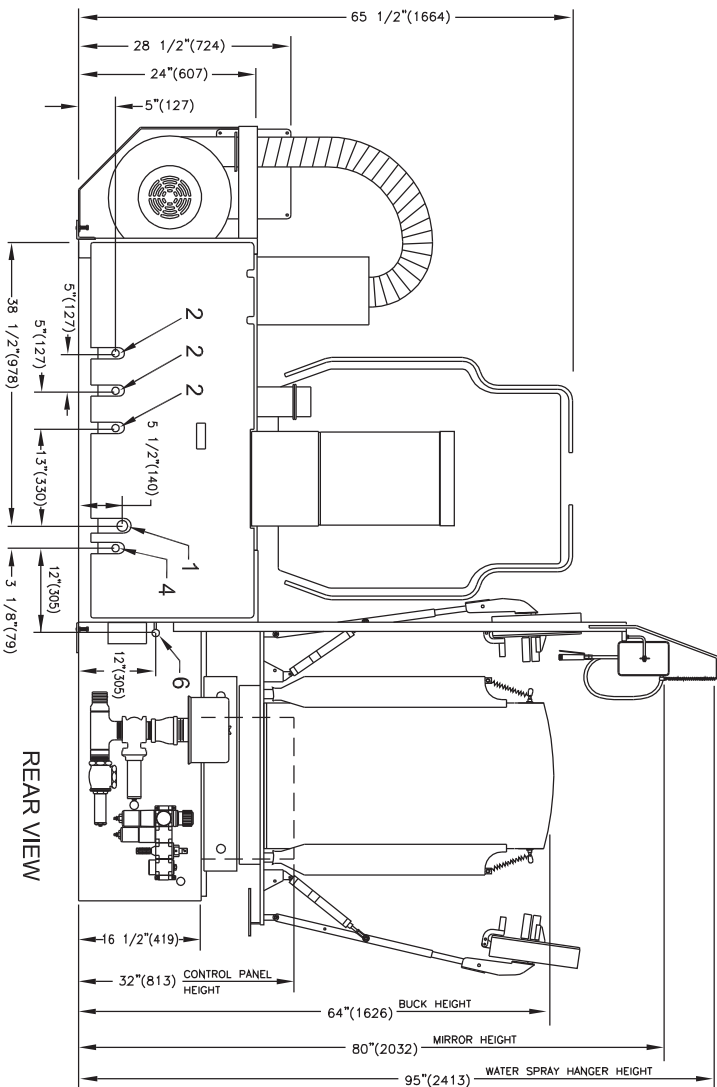
## Models 841SBS

<b>Electrical connections</b>	841SBS
208-230V 3PH 50/60Hz 16.9-15.5AMPS 3.6KW	standard
380/415/460V 3PH 50/60Hz 8.7/8.4/8.6AMPS 3.7KW	optional
<b>Steam and Air connection</b>	
Steam Inlet	NPT 1"
Steam Outlet (total of 3 outlets)	NPT 1/2"
Rec. steam pressure	PSIG 115-125 KPa 793-862
Steam consumption @ 125psig(862 kPa)	BHP 2.5 kg/hr 39 lb/hr 86
Compressed air Air consumption(per shirt)	NPT 3/8"
	free air/cycle at 85psig 1.3 FT <sup>3</sup> free air/cycle at 586KPa .04m <sup>3</sup>
Rec. air pressure	PSIG 85 KPa 586
Water Connection (for water spray)	NPT 1/4"
<b>Weight (crated)</b>	
Shipping	lbs 2200 kg 998
1 Steam Connection	4 Air connection
2 Steam Outlet	5 Electrical connection
3 Control Push Buttons	6 Water connection

### BODY BUCK DIMENSIONS



TOP VIEW



REAR VIEW

**Detail Line Drawing**  
(millimeters shown in parentheses)